



## 8. TOWN OF COLDSRING

This jurisdictional annex to the Cattaraugus County Hazard Mitigation Plan (HMP) provides information to assist public and private sectors in the Town of Coldspring with reducing losses from future hazard events. This annex is not guidance of what to do when a disaster occurs; its focus is on actions that can be implemented prior to a disaster to reduce or eliminate damage to property and people. The annex presents a general overview of Coldspring, describes who participated in the planning process, assesses Coldspring’s risk, vulnerability, and capabilities, and outlines a strategy for achieving a more resilient community.

### 8.1 HAZARD MITIGATION PLANNING TEAM

The Town of Coldspring identified primary and alternate HMP points of contact and developed this plan over the course of several months, with input from many Town departments. The Highway Superintendent represented the community on the Cattaraugus County HMP Planning Partnership supported the local planning process by securing input from persons with specific knowledge to enhance the plan. All departments were asked to contribute to the annex development through reviewing and contributing to the capability assessment, reporting on the status of previously identified actions, and participating in action identification and prioritization.

Table 8-1 summarizes Town officials who participated in the development of the annex and in what capacity. Additional documentation of the Town’s planning activities through Planning Partnership meetings is included in Volume I.

Table 8-1. Hazard Mitigation Planning Team

Primary Point of Contact	Alternate Point of Contact
Name/Title: Kirk Hayes, Highway Superintendent Address: 2604 Lebanon Road, Steamburg, NY 14783 Phone Number: (716) 499-0342 Email: coldspringhwy@windstream.net	Name/Title: Tina Hyde, Supervisor Address: 2604 Lebanon Road, Steamburg, NY 14783 Phone Number: (716) 969-3567 Email: townofcoldspringssupervisor@outlook.com
<b>National Flood Insurance Program Floodplain Administrator</b>	
Name/Title: Randall Brooks, Code Enforcement Officer Address: 2604 Lebanon Road, Steamburg, NY 14783 Phone Number: (716) 665-8924 Email: rjbrooks02@hotmail.com	

### 8.2 COMMUNITY PROFILE

The Town of Coldspring lies in the southwestern part of Cattaraugus County in western New York State and has a total area of 52 square miles. The Allegheny River partially forms the southern town border. The town is bordered to the north by the Town of Napoli, to the east is the Towns of Salamanca and Red House, to the south is the State of Pennsylvania, and to the west is the Towns of South Valley and Randolph. The Town of Coldspring was formed in 1837 from part of the Town of Napoli.

Research has shown that some populations are at greater risk from hazard events because of decreased resources or physical abilities. These populations can be more susceptible to hazard events based on a number of factors including their physical and financial ability to react or respond during a hazard, and the location and construction quality of their housing. Data from the 2022 5-Year American Community Survey indicates that 2.6 percent of the



population is 5 years of age or younger, 15.5 percent is 65 years of age or older, 0 percent is non-English speaking, 12.9 percent is below the poverty threshold, and 19.8 percent is considered disabled.

### 8.3 JURISDICTIONAL CAPABILITY ASSESSMENT AND INTEGRATION

Coldspring performed an inventory and analysis of existing capabilities, plans, programs, and policies that enhance its ability to implement mitigation strategies. Volume I describes the components included in the capability assessment and their significance for hazard mitigation planning. The jurisdictional assessment for this annex includes analyses of the following:

- Planning and regulatory capabilities
- Development and permitting capabilities
- Administrative and technical capabilities
- Fiscal capabilities
- Education and outreach capabilities
- Classification under various community mitigation programs
- Adaptive capacity to withstand hazard events

For a community to succeed in reducing long-term risk, hazard mitigation must be integrated into day-to-day local government operations. As part of the hazard mitigation analysis, planning and /policy documents were reviewed and each jurisdiction was surveyed to obtain a better understanding of their progress toward plan integration. Development of an updated mitigation strategy provided an opportunity for Coldspring to identify opportunities for integrating mitigation concepts into ongoing Town procedures.

#### 8.3.1 Planning and Regulatory Capability and Integration

Table 8-2 summarizes the planning and regulatory tools that are available to Coldspring.

Table 8-2. Planning and Regulatory Capability and Integration

	Jurisdiction has this? (Yes/No)	Citation and Date (code chapter or name of plan, date of enactment or plan adoption)	Authority (local, county, state, federal)	Responsible Person, Department or Agency
<b>CODES, ORDINANCES, &amp; REGULATIONS</b>				
<b>Building Code</b>	Yes	Local Law 1, 2011: Enforcement of the NYS Uniform Fire Prevention and Building Code	State and Local	Code Enforcement, Town Board
How has or will this be integrated with the HMP and how does this reduce risk? Code applies to construction, alteration, enlargement, replacement, repair, equipment, use and occupancy, location, maintenance, removal and demolition of every building or structure or any appurtenances connected or attached to such buildings or structures.				
<b>Zoning/Land Use Code</b>	No	-	-	-
How has or will this be integrated with the HMP and how does this reduce risk?				



	Jurisdiction has this? (Yes/No)	Citation and Date (code chapter or name of plan, date of enactment or plan adoption)	Authority (local, county, state, federal)	Responsible Person, Department or Agency
<b>Subdivision Code</b> How has or will this be integrated with the HMP and how does this reduce risk?	No	-	-	-
<b>Site Plan Code</b> How has or will this be integrated with the HMP and how does this reduce risk?	No	-	-	-
<b>Stormwater Management Code</b> How has or will this be integrated with the HMP and how does this reduce risk?	No	-	-	-
<b>Post-Disaster Recovery/ Reconstruction Code</b> How has or will this be integrated with the HMP and how does this reduce risk?	No	-	-	-
<b>Real Estate Disclosure Requirements</b> How has or will this be integrated with the HMP and how does this reduce risk? In addition to facing potential liability for failing to disclose under the exceptions to “caveat emptor,” a home seller must make certain disclosures under the law or pay a credit of \$500 to the buyer at closing. While the PCDA requires a seller to complete a standardized disclosure statement and deliver it to the buyer before the buyer signs the final purchase contract, in practice, most home sellers in New York opt not to complete the statement and instead pay the credit.	Yes	Property Condition Disclosure Act, NY Code - Article 14 §460-467	State	NYS Department of State, Real Estate Agent
<b>Growth Management</b> How has or will this be integrated with the HMP and how does this reduce risk?	No	-	-	-
<b>Environmental Protection Ordinance(s)</b> How has or will this be integrated with the HMP and how does this reduce risk?	No	-	-	-
<b>Flood Damage Prevention Ordinance</b> How has or will this be integrated with the HMP and how does this reduce risk? Promotes public health, safety, and general welfare, and to minimize public and private losses due to flood conditions in specific areas.	Yes	Local Law 2, 1992:Flood Damage Prevention	Federal, State, County and Local	CEO
<b>Wellhead Protection</b> How has or will this be integrated with the HMP and how does this reduce risk?	No	-	-	-
<b>Emergency Management Ordinance</b> How has or will this be integrated with the HMP and how does this reduce risk?	No	-	-	-
<b>Climate Change Ordinance</b> How has or will this be integrated with the HMP and how does this reduce risk?	No	-	-	-



	Jurisdiction has this? (Yes/No)	Citation and Date (code chapter or name of plan, date of enactment or plan adoption)	Authority (local, county, state, federal)	Responsible Person, Department or Agency
<b>Other</b> How has or will this be integrated with the HMP and how does this reduce risk?	No	-	-	-
<b>PLANNING DOCUMENTS</b>				
<b>General/Comprehensive Plan</b> How has or will this be integrated with the HMP and how does this reduce risk?	No	-	-	-
<b>Capital Improvement Plan</b> How has or will this be integrated with the HMP and how does this reduce risk?	No	-	-	-
<b>Disaster Debris Management Plan</b> How has or will this be integrated with the HMP and how does this reduce risk?	No	-	-	-
<b>Floodplain Management or Watershed Plan</b> How has or will this be integrated with the HMP and how does this reduce risk?	No	-	-	-
<b>Stormwater Management Plan</b> How has or will this be integrated with the HMP and how does this reduce risk?	No	-	-	-
<b>Open Space Plan</b> How has or will this be integrated with the HMP and how does this reduce risk?	No	-	-	-
<b>Urban Water Management Plan</b> How has or will this be integrated with the HMP and how does this reduce risk?	No	-	-	-
<b>Habitat Conservation Plan</b> How has or will this be integrated with the HMP and how does this reduce risk?	No	-	-	-
<b>Economic Development Plan</b> How has or will this be integrated with the HMP and how does this reduce risk?	No	-	-	-
<b>Community Wildfire Protection Plan</b> How has or will this be integrated with the HMP and how does this reduce risk?	No	-	-	-
<b>Community Forest Management Plan</b> How has or will this be integrated with the HMP and how does this reduce risk?	No	-	-	-
<b>Transportation Plan</b> How has or will this be integrated with the HMP and how does this reduce risk?	No	-	-	-



	Jurisdiction has this? (Yes/No)	Citation and Date (code chapter or name of plan, date of enactment or plan adoption)	Authority (local, county, state, federal)	Responsible Person, Department or Agency
<b>Agriculture Plan</b> How has or will this be integrated with the HMP and how does this reduce risk?	No	-	-	-
<b>Climate Action/ Resilience/Sustainability Plan</b> How has or will this be integrated with the HMP and how does this reduce risk?	No	-	-	-
<b>Tourism Plan</b> How has or will this be integrated with the HMP and how does this reduce risk?	No	-	-	-
<b>Business/ Downtown Development Plan</b> How has or will this be integrated with the HMP and how does this reduce risk?	No	-	-	-
<b>Other</b> How has or will this be integrated with the HMP and how does this reduce risk?	No	-	-	-
<b>RESPONSE/RECOVERY PLANNING</b>				
<b>Comprehensive Emergency Management Plan</b> How has or will this be integrated with the HMP and how does this reduce risk?	No	-	-	-
<b>Continuity of Operations Plan</b> How has or will this be integrated with the HMP and how does this reduce risk?	No	-	-	-
<b>Substantial Damage Response Plan</b> How has or will this be integrated with the HMP and how does this reduce risk?	No	-	-	-
<b>Threat and Hazard Identification and Risk Assessment</b> How has or will this be integrated with the HMP and how does this reduce risk?	No	-	-	-
<b>Post-Disaster Recovery Plan</b> How has or will this be integrated with the HMP and how does this reduce risk?	No	-	-	-
<b>Public Health Plan</b> How has or will this be integrated with the HMP and how does this reduce risk?	No	-	-	-
<b>Other</b> How has or will this be integrated with the HMP and how does this reduce risk?	No	-	-	-



### 8.3.2 Development and Permitting Capability

Table 8-3 summarizes the capabilities of Coldspring to oversee and track development.

Table 8-3. Development and Permitting Capability

	Yes/No	Comment
Do you issue development permits? <ul style="list-style-type: none"> <li>If you issue development permits, what department is responsible?</li> <li>If you do not issue development permits, what is your process for tracking new development?</li> </ul>	Yes	Code Enforcement
Are permits tracked by hazard area? (For example, floodplain development permits.)	Yes	
Do you have a buildable land inventory? <ul style="list-style-type: none"> <li>If you have a buildable land inventory, please describe</li> </ul>	No	-
Describe the level of buildout in your jurisdiction.	N/A	10-15% remains available

### 8.3.3 Administrative and Technical Capability

Table 8-4 summarizes potential staff and personnel resources available to Coldspring and their current responsibilities that contribute to hazard mitigation.

Table 8-4. Administrative and Technical Capabilities

Resources	Available? (Yes/No)	Comment (available staff, responsibilities, support of hazard mitigation)
<b>ADMINISTRATIVE CAPABILITY</b>		
Planning Board	No	-
Zoning Board of Adjustment	No	-
Planning Department	No	-
Mitigation Planning Committee	No	-
Environmental Board/Commission	No	-
Open Space Board/Committee	No	-
Economic Development Commission/Committee	No	-
Public Works/Highway Department	Yes	Highway Superintendent
Construction/Building/Code Enforcement Department	Yes	Code Enforcement Officer
Emergency Management/Public Safety Department	No	-
Maintenance programs to reduce risk (stormwater maintenance, tree trimming, etc.)	No	-
Mutual aid agreements	Yes	Fire Department



Resources	Available? (Yes/No)	Comment (available staff, responsibilities, support of hazard mitigation)
Human Resources Manual - Do any job descriptions specifically include identifying or implementing mitigation projects or other efforts to reduce natural hazard risk?	No	-
Other	No	-
<b>TECHNICAL/STAFFING CAPABILITY</b>		
Planners or engineers with knowledge of land development and land management practices	No	-
Engineers or professionals trained in building or infrastructure construction practices	No	-
Planners or engineers with an understanding of natural hazards	No	-
Staff with expertise or training in benefit/cost analysis	No	-
Professionals trained in conducting damage assessments	No	-
Personnel skilled or trained in GIS and/or Hazus applications	No	-
Staff that work with socially vulnerable populations or underserved communities	No	-
Environmental scientists familiar with natural hazards	No	-
Surveyors	Yes	Code Enforcement
Emergency manager	No	-
Grant writers	No	-
Resilience Officer	No	-
Other (this could include stormwater engineer, environmental specialist, etc.)	No	-

### 8.3.4 Fiscal Capability

Table 8-5 summarizes financial resources available to Coldspring.

Table 8-5. Fiscal Capabilities

Financial Resources	Accessible or Eligible to Use? (Yes/No)
Community Development Block Grants (CDBG, CDBG-DR)	Yes
Capital improvement project funding	Yes
Authority to levy taxes for specific purposes	Yes
User fees for water, sewer, gas, or electric service	Yes
Impact fees for homebuyers or developers of new development/homes	Yes



Financial Resources	Accessible or Eligible to Use? (Yes/No)
Stormwater utility fee	No
Incur debt through general obligation bonds	Yes
Incur debt through special tax bonds	Yes
Incur debt through private activity bonds	Yes
Withhold public expenditures in hazard-prone areas	Yes
Other federal or state funding programs	Yes
Open Space Acquisition funding programs	Yes
Other (for example, Clean Water Act 319 Grants [Nonpoint Source Pollution])	Yes

### 8.3.5 Education and Outreach Capability

Table 8-6 summarizes the education and outreach resources available to Coldspring.

Table 8-6. Education and Outreach Capabilities

Outreach Resources	Available? (Yes/No)	Comment
Public information officer or communications office	Yes	Supervisor
Personnel skilled or trained in website development	Yes	Southern Tier West
Hazard mitigation information available on your website	Yes	
Social media for hazard mitigation education and outreach	Yes	
Citizen boards or commissions that address issues related to hazard mitigation	Yes	Town Board
Warning systems for hazard events	Yes	Fire Department
Natural disaster/safety programs in place for schools	Yes	Fire and Severe Storm programs
Organizations that conduct outreach to socially vulnerable populations and underserved populations	No	-
Public outreach mechanisms / programs to inform citizens on natural hazards, risk, and ways to protect themselves during such events	No	-

### 8.3.6 Community Classifications

Table 8-7 summarizes classifications for community programs available to Coldspring.

Table 8-7. Community Classifications

Program	Participating? (Yes/No)	Classification	Date Classified
Community Rating System (CRS)	No	-	-
Building Code Effectiveness Grading Schedule (BCEGS)	No	-	-
Public Protection (ISO Fire Protection Classes 1 to 10)	Yes	5	2017
National Weather Service StormReady Certification	No	-	-
Firewise Communities classification	No	-	-



Program	Participating? (Yes/No)	Classification	Date Classified
Other: Organizations with mitigation focus (advocacy group, non-government)	No	-	-

N/A = Not applicable  
 — = Unavailable

### 8.3.7 Adaptive Capacity

Adaptive capacity is defined as “the ability of systems, institutions, humans and other organisms to adjust to potential damage, to take advantage of opportunities, or respond to consequences” (IPCC 2022). Each jurisdiction has a unique combination of capabilities to adjust to, protect from, and withstand a future hazard event, future conditions, and changing risk. Table 8-8 summarizes the adaptive capacity for each identified hazard of concern and the Town’s capability to address related actions using the following classifications:

- Strong: Capacity exists and is in use.
- Moderate: Capacity might exist; but is not used or could use some improvement.
- Weak: Capacity does not exist or could use substantial improvement

Table 8-8. Adaptive Capacity

Hazard	Adaptive Capacity - Strong/Moderate/Weak
Dam and Levee Failure	Moderate
Flood	Moderate
Landslide	Moderate
Pandemic	Moderate
Severe Storm	Moderate
Severe Winter Storm	Moderate
Utility Failure	Moderate
Wildfire	Moderate

## 8.4 NATIONAL FLOOD INSURANCE PROGRAM COMPLIANCE

This section provides specific information on the management and regulation of the regulatory floodplain, including current and future compliance with the National Flood Insurance Program (NFIP). The floodplain administrator listed in Table 8-1 is responsible for maintaining this information.

### 8.4.1 NFIP Statistics

Table 8-9 summarizes the NFIP policy and claim statistics for Coldspring.

Table 8-9. Coldspring NFIP Summary of Policy and Claim Statistics

# Policies	1
# Claims (Losses)	5
Total Loss Payments	\$40,275.76



# Policies	1
# Repetitive Loss Properties (NFIP definition)	1
# Repetitive Loss Properties (FMA definition)	0
# Severe Repetitive Loss Properties	0

*NFIP Definition of Repetitive Loss: The NFIP defines a repetitive loss property as any insurable building for which two or more claims of more than \$1,000 were paid by the NFIP within any rolling 10-year period since 1978.*

*FMA Definition of Repetitive Loss: FEMA’s Flood Mitigation Assistance (FMA) program defines a repetitive loss property as any insurable building that has incurred flood-related damage on two occasions, in which the cost of the repair, on average, equaled or exceeded 25 percent of the market value of the structure at the time of each such flood event.*

*Definition of Severe Repetitive Loss: A residential property covered under an NFIP flood insurance policy and: (a) That has at least four NFIP claim payments over \$5,000 each, and the cumulative amount of such claims payments exceeds \$20,000; or (b) For which at least two separate claims payments have been made with the cumulative amount of the building portion of such claims exceeding the market value of the building. At least two of the claims must have occurred within any 10-year period, more than 10 days apart.*

Source: FEMA 2024

### 8.4.2 Flood Vulnerability Summary

Table 8-10 provides a summary of the NFIP program in Coldspring.

Table 8-10. NFIP Summary

NFIP Topic	Comments
<b>Flood Vulnerability Summary</b>	
Describe areas prone to flooding in your jurisdiction.	County Road 9 near Intersection of NYS 394 – constant flooding of stream (DEC permit issues for stream and beaver dams) noted on HMP 2020.
Do you maintain a list of properties that have been damaged by flooding?	Property owners nearby not interested in acquisition; County made an offer, and they declined.
Do you maintain a list of property owners interested in flood mitigation?	No
How many homeowners and/or business owners are interested in mitigation (elevation or acquisition)?	Other property owners near the flooding on County Road 9 are not interested but would like the creek dredged and beaver dams removed so that creek flows like it used to without backing up. Now basements are flooding across the road on Flood Road.
Are any RiskMAP projects currently underway in your jurisdiction? If so, state what projects are underway.	No
How do you make Substantial Damage determinations?	Procedures are not developed.
How many Substantial Damage determinations were declared for recent flood events in your jurisdiction?	None
How many properties have been mitigated (elevation or acquisition) in your jurisdiction? If there are mitigation properties, how were the projects funded?	None
Do your flood hazard maps adequately address the flood risk within your jurisdiction? If not, state why.	No, they need to be updated.



NFIP Topic	Comments
<b>NFIP Compliance</b>	
What local department is responsible for floodplain management?	Office of Code Enforcement
Are any certified floodplain managers on staff in your jurisdiction?	Yes
Do you have access to resources to determine possible future flooding conditions from climate change?	Yes, the County has a GIS department capable of analyzing future flooding conditions.
Does your floodplain management staff need any assistance or training to support its floodplain management program? If so, what type of assistance/training is needed?	Additional training on floodplain management in general is needed.
Provide an explanation of NFIP administration services you provide (e.g., permit review, GIS, education/outreach, inspections, engineering capability)	Permit review and inspections are performed
How do you determine if proposed development on an existing structure would qualify as a substantial improvement?	If the development is at least 50% of the total original value
What are the barriers to running an effective NFIP program in the community, if any?	Funding issues
Does your jurisdiction have any outstanding NFIP compliance violations that need to be addressed? If so, state the violations.	No
When was the most recent Community Assistance Visit (CAV) or Community Assistance Contact (CAC)?	CAC: April 10, 2012 CAV: Not applicable
What is the local law number or municipal code of your flood damage prevention ordinance?	Local Law 2, 1992: Flood Damage Prevention
What is the date that your flood damage prevention ordinance was last amended?	1992
Does your floodplain management program meet or exceed minimum requirements? If exceeds, in what ways?	Meets minimum requirements
Are there other local ordinances, plans or programs (e.g., site plan review) that support floodplain management and meeting the NFIP requirements? For instance, does the planning board or zoning board consider efforts to reduce flood risk when reviewing variances such as height restrictions?	Code Enforcement does site plan reviews
Does your community plan to join the CRS program or is your community interested in improving your CRS classification?	No

## 8.5 GROWTH/DEVELOPMENT TRENDS

Understanding how past, current, and projected development patterns have or are likely to increase or decrease risk in hazard areas is a key component to appreciating a jurisdiction's overall risk to its hazards of concern. Recent and expected future development trends, including major residential/commercial development and major infrastructure development, are summarized in Table 8-11 through Table 8-13.



Table 8-11. Number of Building Permits for New Construction Issued Since the Previous HMP

	New Construction Permits Issued			
	Single Family	Multi-Family	Other (commercial, mixed-use, etc.)	Total
<b>2019</b>				
Total Permits	4	0	0	4
Permits within SFHA	0	0	0	0
<b>2020</b>				
Total Permits	2	0	0	2
Permits within SFHA	0	0	0	0
<b>2021</b>				
Total Permits	5	0	0	5
Permits within SFHA	0	0	0	0
<b>2022</b>				
Total Permits	3	0	0	3
Permits within SFHA	0	0	0	0
<b>2023</b>				
Total Permits	1	0	0	1
Permits within SFHA	0	0	0	0
<b>2024</b>				
Total Permits	0	0	0	0
Permits within SFHA	0	0	0	0

SFHA = Special Flood Hazard Area (1% flood event)

Table 8-12. Recent Major Development and Infrastructure from 2019 to Present

Property or Development Name	Type of Development	# of Units / Structures	Location (address and/or block and lot)	Known Hazard Zones*	Description / Status of Development
There has been no recent major development or infrastructure between 2019 to present.					

\* Only location-specific hazard zones or vulnerabilities identified.

Table 8-13. Known or Anticipated Major Development and Infrastructure in the Next Five Years

Property or Development Name	Type of Development	# of Units / Structures	Location (address and/or block and lot)	Known Hazard Zones*	Description / Status of Development
There are no known or anticipated major development or infrastructure in the next five years.					



## 8.6 JURISDICTIONAL RISK ASSESSMENT

---

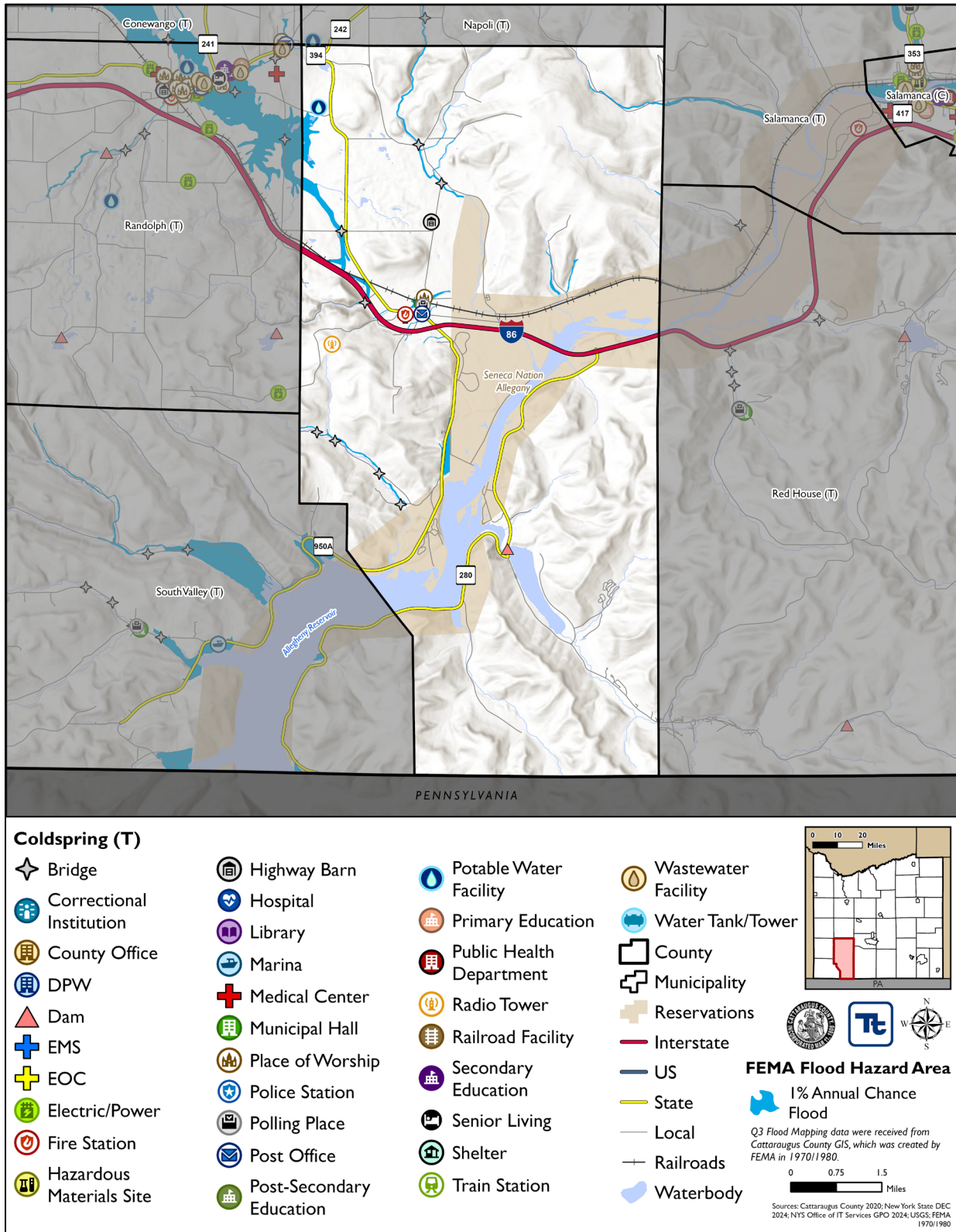
The hazard profiles in Volume I provide detailed information regarding each planning partner's vulnerability to the identified hazards, including summaries of Coldspring's risk assessment results and data used to determine the hazard ranking. Key local risk assessment information is presented below.

### 8.6.1 Hazard Area

Hazard area maps provided below illustrate the probable hazard areas impacted within the Town are shown in Figure 8-1 through Figure 8-2. These maps are based on the best available data at the time of the preparation of this plan and are adequate for planning purposes. Maps are provided only for hazards that can be identified clearly using mapping techniques and technologies and for which Coldspring has significant exposure. The maps show the location of potential new development, where available.



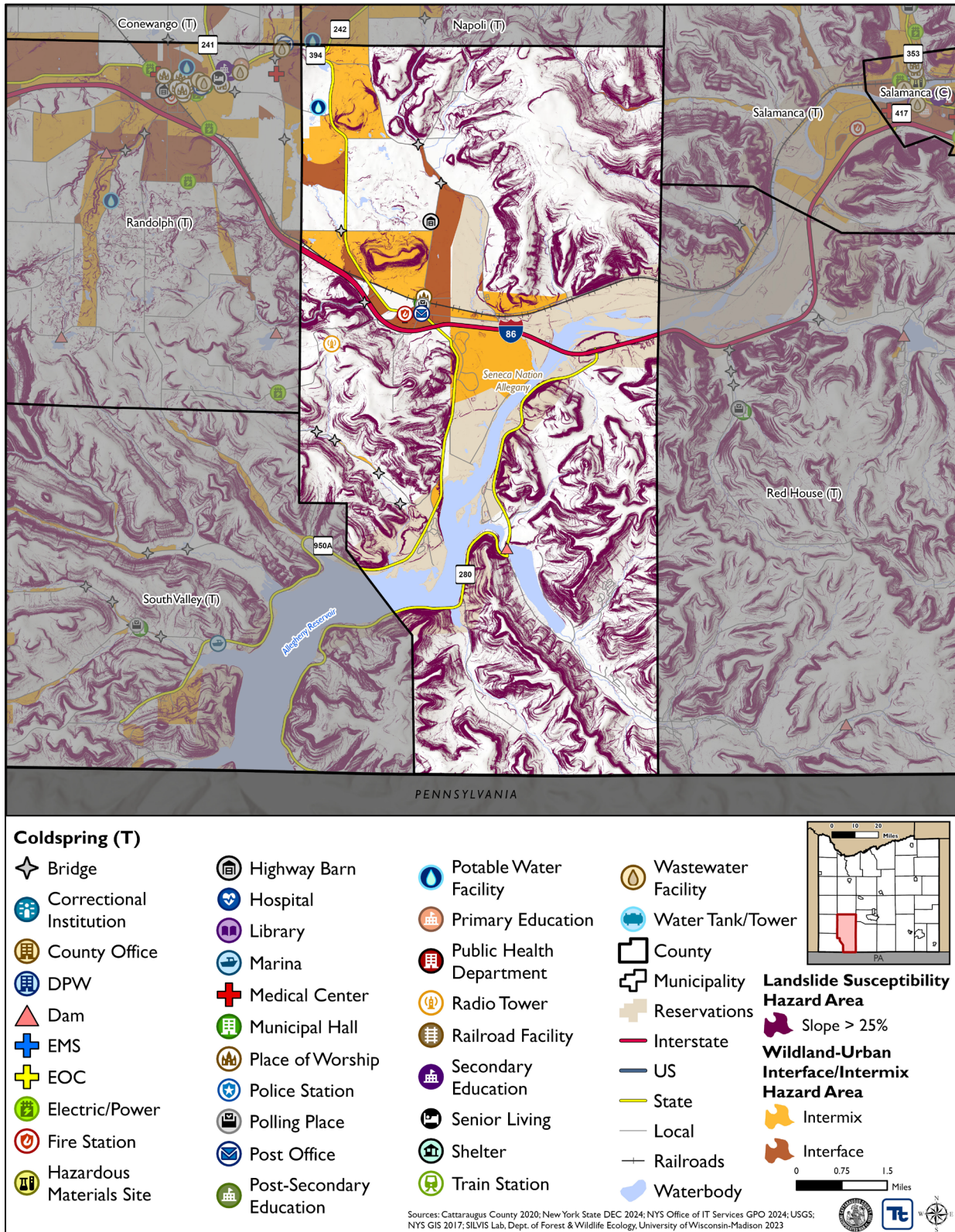
Figure 8-1. Coldspring Flood Hazard Area Extent and Location Map



Note: The shown flood hazard area is limited to the FEMA-defined flood hazard areas. Areas of localized flooding are not reflected in the above Figure.



Figure 8-2. Coldspring Landslide and Wildfire Hazard Area Extent and Location Map





### 8.6.2 Hazard Event History

The history of natural and non-natural hazard events in Coldspring is detailed in Volume I, where each hazard profile includes a chronology of historical events that have affected the County and its municipalities. Table 8-14 provides details on loss and damage in Coldspring during hazard events since the last hazard mitigation plan update.

Table 8-14. Hazard Event History in Coldspring

Dates of Event	Event Type (Disaster Declaration)	County Designated?	Summary of Event	Summary of Damage and Losses in Coldspring
October 31- November 1, 2019	DR-4472	No	Severe Storms, Straight-Line Winds, and Flooding	The Town did not experience any documented damages or losses.
March 13, 2020	EM-3434 DR-4480	Yes	COVID-19 Pandemic	The Town adhered to the COVID-19 guidelines, with individuals working from home or practicing social distancing.
January 12, 2020	High Wind	N/A	High wind	The Town did not experience any documented damages or losses.
July 16, 2020	Thunderstorm Wind	N/A	Trees and wires were reported down in Gowanda.	The Town did not experience any documented damages or losses.
July 19, 2020	Thunderstorm Wind	N/A	Multiple reports of trees down around Gowanda, Ashville Bay, Napoli and Portville.	The Town did not experience any documented damages or losses.
August 15, 2020	Flash Flood	N/A	Marble Road and Potter Road in Lime Lake were reported to be washed out by law enforcement.	The Town did not experience any documented damages or losses.
September 7, 2020	Thunderstorm Wind	N/A	Property damage in Olean.	The Town did not experience any documented damages or losses.
November 15, 2020	High Wind	N/A	Property damage throughout Cattaraugus County.	The Town did not experience any documented damages or losses.
July 13, 2021	Thunderstorm Wind	N/A	Several reports were received of trees down, trees on cars, trees on houses, and powerlines down in Salamanca, Olean, and Allegany.	The Town did not experience any documented damages or losses.
December 11, 2021	High Wind	N/A	Dozens of reports of trees and powerlines down were received.	The Town did not experience any documented damages or losses.
March 6, 2022	High Wind	N/A	High wind	The Town did not experience any documented damages or losses.
July 24, 2022	Thunderstorm Wind	N/A	Trees and powerlines reported down in East Otto, Randolph, and South Dayton.	The Town did not experience any documented damages or losses.



Dates of Event	Event Type (Disaster Declaration)	County Designated?	Summary of Event	Summary of Damage and Losses in Coldspring
November 20, 2022	EM-3589	Yes	Severe Winter Storm and Snowstorm	The Town did not experience any documented damages or losses.

EM = Emergency Declaration (FEMA)  
 FEMA = Federal Emergency Management Agency  
 DR = Major Disaster Declaration (FEMA)  
 N/A = Not applicable

### 8.6.3 Hazard Ranking and Vulnerabilities

The hazard profiles in Volume I have detailed information regarding each planning partner’s vulnerability to the identified hazards. The following presents key risk assessment results for Coldspring .

#### Hazard Ranking

The participating jurisdictions have differing degrees of vulnerability to the hazards of concern, so each jurisdiction ranked its own degree of risk to each hazard. The community-specific hazard ranking is based on problems and impacts identified by the risk assessment presented in Volume I. The ranking process involves an assessment of the likelihood of occurrence for each hazard; the potential impacts of the hazard on people, property, and the economy; community capabilities to address the hazard; and changing future climate conditions. Coldspring reviewed the County hazard ranking and individual results to assess the relative risk of the hazards of concern to the community. During the review of the hazard ranking, the Town indicated the following:

- The Town decreased its hazard ranking for the Wildfire hazard from Medium to Low due to the limited fire fuel.

Table 8-15 shows Coldspring’s final hazard rankings for identified hazards of concern. Mitigation action development uses the ranking to target hazards with the highest risk.

Table 8-15. Hazard Ranking

Hazard	Rank
Dam and Levee Failure	Medium
Flood	Medium
Landslide	High
Pandemic	Medium
Severe Storm	High
Severe Winter Storm	High
Utility Failure	Medium
Wildfire	Low

Note: The scale is based on the hazard rankings established in Volume I, modified as appropriate based on review by the jurisdiction



### Critical Facilities

Table 8-16 identifies critical facilities in the community located in the 1 percent and 0.2 percent annual chance floodplains.

Table 8-16. Critical Facilities Flood Vulnerability

Name	Type	Vulnerability		Addressed by Proposed Action	Already Protected to 0.2% Flood Level (describe protections)
		1% Event	0.2% Event		
Coldspring 12	Bridge	X	-	2025-ColdSpringT-12	-
Coldspring 13	Bridge	X	-	2025-ColdSpringT-12	-
Coldspring 18	Bridge	X	-	2025-ColdSpringT-12	-
Coldspring Town Hall	Polling Place	X	-	2025-ColdSpringT-01	-
Town of Coldspring	Municipal Hall	X	-	2025-ColdSpringT-01	-

Source: Cattaraugus County 2024

### 8.6.4 Identified Issues

After a review of Coldspring’s hazard event history, hazard rankings, hazard location, and current capabilities, Coldspring identified the following vulnerabilities within the community:

- The Town Hall, which is also a polling place, is a critical facility located in the Special Flood Hazard Area and may have an increased risk to flooding impacts.
- Frequent flooding events have resulted in damages to residential properties. These properties have been repetitively flooded as documented by paid NFIP claims. The Town has one repetitive loss properties, but other properties may be impacted by flooding as well.
- The Town does not have a Substantial Damage Management Plan in place, nor do they have a formal process in place when conducting substantial damage determinations. The Town is in need of a formal process and plan to provide a framework for conducting such inspections and determinations.
- Landslide events are often driven by hazards such as heavy rain events, flooding, heavy snowmelt, and wildfires. Landslides can destroy the natural and built environments, causing detriment to the structures in its path. Landslides may be able to be mitigated by cutting banks to prevent erosion. The Town has many steep sloped areas throughout its jurisdiction and should determine local vulnerabilities to landslides threatening primary roadways and properties.
- Floodplain managers require training. Those responsible for floodplain management are lacking in their knowledge of required duties. Training is sorely needed for all municipal officials and for code enforcement officials in charge of municipalities.
- The current flood damage prevention ordinance does not include the 2-foot mandated NYS freeboard requirements. While the existing ordinance may be compliant with NFIP requirements, State requirements which exceed NFIP requirements must be adhered to.
- The Town currently does not have a comprehensive education and outreach program which addresses all identified hazards of concern. There is a need to educate residents and businesses about hazard mitigation, preparation, response, and recovery utilizing a variety of outreach methods. The Town does not currently have hazard mitigation information and outreach on the Town website.



- The Town has an outdated Comprehensive Emergency Management Plan (CEMP). Hazard mitigation principles need to be integrated into the CEMP. A CEMP establishes the overall authority, roles, and functions performed during incidents. Incorporating hazard mitigation principles into a CEMP ensures hazard risk is identified.
- There are cell phone connectivity issues in the Town which negatively influences emergency communication. A lack of ability to communicate can impact an individual's ability to understand or learn how to reduce their risk to hazards and mitigate those risks. A lack of connectivity can also impact first responders, as they must be able to communicate during events or incidents associated with all hazards of concern.
- Critical facilities require backup power to ensure continuity of operations. The Town Highway Building (3017 Lebanon Road) does not have automatic backup power, which could impact the continuity of operations at the facility in the event of a utility or power failure. High winds severe weather and severe winter weather are known to cause utility failures, which would impact the continuity of operations at both critical facilities.
- Flood prone roads not only interrupt the movement of persons and goods but can lead to isolation issues where first responders are unable to reach their destination and cause evacuation routes to be inaccessible. Flooded road ways may be caused by debris in culverts from severe storms and severe winter storms. There are multiple roads in Town which may benefit from flood mitigation strategies, such as the elevation of the roadways or the hardening of the infrastructure surrounding them to reduce likelihood of flooding including County Road 9 (Price Corners Road).
- Scour on bridges can develop due to erosion. Erosion may occur due to waters impacting the bridge's structure during severe winter storms and severe storms when the precipitation causes the water movements to be more erratic. Rising waters may cause flooding conditions to further erode the structure of the bridge. The following bridges in the jurisdiction should be evaluated to determine useability and to identify potential solutions, as necessary:
  - Coldspring 12
  - Coldspring 13
  - Coldspring 18
- Federal accreditation of floodwater retention structures shows the dams and levees have met and continue to meet the minimum regulatory standards set by the regulatory agencies. The accreditation of these structures show they are able to support efforts in the mitigation of flood risk.

## 8.7 MITIGATION STRATEGY AND PRIORITIZATION

---

This section discusses the status of mitigation actions from the previous HMP, describes proposed hazard mitigation actions, and prioritizes actions to address over the next five years.

### 8.7.1 Past Mitigation Action Status

Table 8-17 indicates progress on the Town's mitigation strategy identified in the 2020 HMP. Actions that are still recommended but not completed or that are in progress are carried forward and combined with new actions as part of the mitigation strategy for this plan update. Previous actions that are now ongoing programs and capabilities are indicated as such and are presented in the capability assessment earlier in this annex.



## 8.7.2 Additional Mitigation Efforts

Coldspring did not identify any additional mitigation efforts completed since the last HMP.



Table 8-17. Status of Previous Mitigation Actions

Project Number	Project Name	Hazard(s) Addressed	Responsible Party	Brief Summary of the Original Problem and the Solution (Project)	Action Review 1. Status (In Progress, Ongoing Capability, No Progress, Complete) 2. Provide a narrative to describe progress or obstacles that have prevented implementation	Next Steps 1. Project to be included in the 2025 HMP or Discontinue 2. If including action in the 2025 HMP, revise/reword to be more specific (as appropriate). 3. If discontinue, explain why.
2020-Coldspring-001	Implement/Encourage training for Code Enforcement Officers.	Flood	County DPW	<p>Problem: Floodplain managers require training. Those responsible for floodplain management are lacking in their knowledge of required duties. Training is sorely needed for all municipal officials and for code enforcement officials in charge of municipalities. Very little zoning precludes homeowners from building in floodplains, leading to problems later.</p> <p>Solution: Obtain/host specialist training and certification for floodplain managers.</p>	<p>1. No Progress 2. Code Enforcement could use training</p>	<p>1. Include 2. Not applicable 3. Not applicable</p>
2020-Coldspring-002	Update the Flood Damage Prevention Ordinance to include freeboard	Flood	Town Board	<p>Problem: The Flood Damage Prevention Ordinance does not include the 2' freeboard requirement mandated by NYS.</p> <p>Solution: The Flood Damage Prevention Ordinance will be updated to include the 2' freeboard requirement mandated by NYS.</p>	<p>1. No Progress 2. Other Town priorities took precedence</p>	<p>1. Include 2. Not applicable 3. Not applicable</p>



Project Number	Project Name	Hazard(s) Addressed	Responsible Party	Brief Summary of the Original Problem and the Solution (Project)	Action Review 1. Status (In Progress, Ongoing Capability, No Progress, Complete) 2. Provide a narrative to describe progress or obstacles that have prevented implementation	Next Steps 1. Project to be included in the 2025 HMP or Discontinue 2. If including action in the 2025 HMP, revise/reword to be more specific (as appropriate). 3. If discontinue, explain why.
2020-Coldspring-003	Continuous Public Education	Wildfire	County Planning	<p>Problem: Public needs to be educated on what they can do to protect their structures from wildfires.</p> <p>Solution: Provide information to residents, business owners, and organizations about what they can do to protect their structures from wildfires. This will be done via pamphlets and website resources and include such information as: the dissemination of American Red Cross evacuation centers, supplies to have on hand, listing of emergency telephone numbers</p>	<p>1. In Progress 2. Looking to expand to outreach for all hazards</p>	<p>1. Include 2. Change to include outreach for all hazards 3. Not applicable</p>
2020-Coldspring-004	Protect the Town of Coldspring Highway Barn to the 0.2% annual chance flood event.	Flood	Engineer, Facility manager	<p>Problem: Town of Coldspring Highway Barn is located in the special flood hazard area and vulnerable to flooding. Critical facilities must be protected to the 0.2% annual chance flood event.</p> <p>Solution: The town will conduct a feasibility assessment to determine what additional floodproofing measures are needed at the Highway Barn to protect it to the 0.2% annual chance flood event. Options include:</p>	<p>1. Complete 2. The Highway Barn is already protected to the 0.2 percent event.</p>	<p>1. Discontinue 2. Not applicable 3. The Highway Barn is already protected to the 0.2 percent event.</p>



Project Number	Project Name	Hazard(s) Addressed	Responsible Party	Brief Summary of the Original Problem and the Solution (Project)	Action Review 1. Status (In Progress, Ongoing Capability, No Progress, Complete) 2. Provide a narrative to describe progress or obstacles that have prevented implementation	Next Steps 1. Project to be included in the 2025 HMP or Discontinue 2. If including action in the 2025 HMP, revise/reword to be more specific (as appropriate). 3. If discontinue, explain why.
				<ul style="list-style-type: none"> <li>Elevation of facility</li> <li>Floodproofing of facility</li> <li>Mobile flood barriers</li> </ul> <p>Once the most cost-effective option is identified, the town will carry out the option.</p>		
2020-Coldspring-005	Update the Emergency Operations Plan	All Hazards	County, Town	<p>Problem: The Town has an outdated emergency operation plan.</p> <p>Solution: Update the town's emergency operation plan.</p>	<ol style="list-style-type: none"> <li>In Progress</li> <li>Plan under review</li> </ol>	<ol style="list-style-type: none"> <li>Include</li> <li>Not applicable</li> <li>Not applicable</li> </ol>
2020-Coldspring-006	Update Building Codes	All Hazards	County, Town	<p>Problem: The Town has outdated building codes.</p> <p>Solution: The Town will update the town's building codes.</p>	<ol style="list-style-type: none"> <li>Ongoing capability</li> <li>Town codes are reviewed on an ongoing basis</li> </ol>	<ol style="list-style-type: none"> <li>Discontinue</li> <li>Not applicable</li> <li>Current capability</li> </ol>
2020-Coldspring-007	Improve internet access and cell service	Utility failure	Town	<p>Problem: The Town of Coldspring is a rural/underserved area with lack of accessibility to internet and cell service.</p> <p>Solution: Improve cell service and internet by working with telecommunications companies to install cell towers</p>	<ol style="list-style-type: none"> <li>In Progress</li> <li>Armstrong Internet is available throughout Town. There is still a need for a cell tower in the State Park/Coldspring area.</li> </ol>	<ol style="list-style-type: none"> <li>Include</li> <li>Not applicable</li> <li>Not applicable</li> </ol>



Project Number	Project Name	Hazard(s) Addressed	Responsible Party	Brief Summary of the Original Problem and the Solution (Project)	Action Review 1. Status (In Progress, Ongoing Capability, No Progress, Complete) 2. Provide a narrative to describe progress or obstacles that have prevented implementation	Next Steps 1. Project to be included in the 2025 HMP or Discontinue 2. If including action in the 2025 HMP, revise/reword to be more specific (as appropriate). 3. If discontinue, explain why.
2020-Coldspring-008	Backup power to the Town Hall and Highway Building	All hazards	Engineer, Town Board	<p>Problem: Backup power sources are necessary to maintain critical services for critical facilities. The Town Hall and Highway Building lack a permanent power source. The Town Hall location houses the Town Hall, Court, and Clerk, The Highway Building location houses the Highway Department, vehicles and equipment.</p> <p>Solution: The Town Engineer will research what size generators are necessary to supply backup power to the Town Hall and Highway Department. The town will then install backup power generators and necessary electrical components.</p>	<p>1. In Progress 2. A new portable generator was purchased for the Town Hall. A generator for the Town Highway Building/Garage (3017 Lebanon Road) is needed.</p>	<p>1. Include 2. Revise to remove Town Hall and add any additional facilities. 3. Not applicable</p>
2020-Coldspring-009	Determine best action to protect property on County Rd 9/Price Corners and properties on Mat Rd	Flood, Severe Storm	Town Board, FPA	<p>Problem: Repetitive flooding at the property on County Road 9/ Price Corners and properties on May Road</p> <p>Solution: Conduct an engineering study to determine best action to prevent flooding of properties. The Town will then carry out the identified cost-effective action(s).</p>	<p>1. In Progress 2. Project was completed on May Road</p>	<p>1. Include 2. Revise to remove May Road 3. Not applicable</p>



Project Number	Project Name	Hazard(s) Addressed	Responsible Party	Brief Summary of the Original Problem and the Solution (Project)	Action Review 1. Status (In Progress, Ongoing Capability, No Progress, Complete) 2. Provide a narrative to describe progress or obstacles that have prevented implementation	Next Steps 1. Project to be included in the 2025 HMP or Discontinue 2. If including action in the 2025 HMP, revise/reword to be more specific (as appropriate). 3. If discontinue, explain why.
2020-Coldspring-010	Rock work, ditches, and banks cut back to facilitate snow removal during heavy snow events	Severe Winter Storms	Town Highway Department	<p>Problem: Town of Coldspring's roads flood due to snow melt causing hazardous driving conditions and an increase in traffic accidents.</p> <p>Solution: The town will cut back banks and ditches, as well as rock work so that snowplows can remove snow efficiently during heavy snowstorms</p>	<p>1. Ongoing capability 2. Due to regular maintenance this is no longer an issue in the Town.</p>	<p>1. Discontinue 2. Not applicable 3. No longer relevant</p>



### 8.7.3 Proposed Hazard Mitigation Actions for the HMP Update

Coldspring participated in the mitigation strategy workshop for this HMP to identify appropriate actions to include in a local hazard mitigation strategy. Its comprehensive consideration of all possible activities to address hazards of concern included review of the following FEMA documents:

- FEMA 551 “Selecting Appropriate Mitigation Measures for Floodprone Structures” (March 2007)
- FEMA “Mitigation Ideas—A Resource for Reducing Risk to Natural Hazards” (January 2013).

The action worksheets included at the end of this annex list the mitigation actions that Coldspring would like to pursue in the future to reduce the effects of hazards. The actions are dependent upon available funding (grants and local match availability) and may be modified or omitted at any time based on the occurrence of new hazard events and changes in Town priorities.

Table 8-18 indicates the range of proposed mitigation action categories. The four FEMA mitigation action categories and the six CRS mitigation action categories are listed in the table to further demonstrate the wide range of activities and mitigation measures selected.

Volume I identifies 14 evaluation criteria for prioritizing the mitigation actions. To assist with rating each mitigation action as high, medium, or low priority, a numeric rank is assigned (-1, 0, or 1) for each of the evaluation criteria. Table 8-19 provides a summary of the prioritization of all proposed mitigation actions for the HMP update.



Table 8-18. Analysis of Mitigation Actions by Hazard and Category

Hazard	Actions That Address the Hazard, by Action Category									
	FEMA				CRS					
	LPR	SIP	NSP	EAP	PR	PP	PI	NR	SP	ES
Dam and Levee Failure	X			X			X			X
Flood	X	X		X	X		X		X	X
Landslide	X			X	X		X			X
Pandemic	X			X			X			X
Severe Storm	X	X		X	X		X		X	X
Severe Winter Storm	X	X		X	X		X			X
Utility Failure	X	X		X			X		X	X
Wildfire	X			X	X		X			X

*Local Plans and Regulations (LPR)*—These actions include government authorities, policies or codes that influence the way land and buildings are being developed and built.

*Structure and Infrastructure Project (SIP)*—These actions involve modifying existing structures and infrastructure to protect them from a hazard or remove them from a hazard area. This could apply to public or private structures as well as critical facilities and infrastructure. This type of action also involves projects to construct structures to reduce the impact of hazards.

*Natural Systems Protection (NSP)*—These are actions that minimize damage and losses and preserve or restore the functions of natural systems.

*Education and Awareness Programs (EAP)*—These are actions to inform and educate citizens, elected officials, and property owners about hazards and potential ways to mitigate them. These actions may also include participation in national programs, such as StormReady and Firewise Communities

*Preventative Measures (PR)*—Government, administrative or regulatory actions, or processes that influence the way land and buildings are developed and built. Examples include planning and zoning, floodplain local laws, capital improvement programs, open space preservation, and storm water management regulations.

*Property Protection (PP)*—These actions include public activities to reduce hazard losses or actions that involve (1) modification of existing buildings or structures to protect them from a hazard or (2) removal of the structures from the hazard area. Examples include acquisition, elevation, relocation, structural retrofits, storm shutters, and shatter-resistant glass.

*Public Information (PI)*—Actions to inform and educate citizens, elected officials, and property owners about hazards and potential ways to mitigate them. Such actions include outreach projects, real estate disclosure, hazard information centers, and educational programs for school-age children and adults.

*Natural Resource Protection (NR)*—Actions that minimize hazard loss and preserve or restore the functions of natural systems. These actions include sediment and erosion control, stream corridor restoration, watershed management, forest and vegetation management, and wetland restoration and preservation.

*Structural Flood Control Projects (SP)*—Actions that involve the construction of structures to reduce the impact of a hazard. Such structures include dams, setback levees, floodwalls, retaining walls, and safe rooms.

*Emergency Services (ES)*—Actions that protect people and property during and immediately following a disaster or hazard event. Services include warning systems, emergency response services, and the protection of essential facilities



Table 8-19. Summary of Prioritization of Actions

Project Number	Project Name	Scores for Evaluation Criteria														High / Medium / Low	
		Life Safety	Property Protection	Cost-Effectiveness	Political	Legal	Fiscal	Environmental	Social Vulnerability	Administrative	Hazards of Concern	Climate Change	Timeline	Community Lifelines	Other Local Objectives		Total
2025-ColdSpringT-01	Critical Facility Protection	1	1	1	1	1	1	0	1	1	1	0	1	1	0	11	High
2025-ColdSpringT-02	Repetitive Loss Properties	1	1	1	1	1	0	1	1	1	0	1	1	0	1	11	High
2025-ColdSpringT-03	Substantial Damage Management Plan	1	1	1	1	1	1	1	1	1	1	1	1	1	0	13	High
2025-ColdSpringT-04	Landslide Mitigation	1	1	1	1	1	0	1	1	1	1	1	1	1	0	12	High
2025-ColdSpringT-05	Floodplain Management Training	1	1	1	1	1	1	1	1	1	0	1	1	0	0	11	High
2025-ColdSpringT-06	Flood Damage Prevention Ordinance Update	1	1	1	1	1	1	1	1	1	1	1	1	0	0	12	High
2025-ColdSpringT-07	Comprehensive Outreach Program	1	1	1	1	1	1	0	1	1	1	1	1	0	1	12	High
2025-ColdSpringT-08	Comprehensive Emergency Management Plan Update	1	1	1	1	1	1	0	1	1	1	0	1	1	0	11	High
2025-ColdSpringT-09	Cellular Accessibility	1	1	1	1	0	0	0	1	1	1	0	1	1	0	9	Medium
2025-ColdSpringT-10	Generators at Critical Facilities	1	1	1	1	1	1	0	1	1	1	1	1	1	0	12	High
2025-ColdSpringT-11	Floodprone Roads	1	1	1	1	1	0	1	1	1	1	1	1	1	0	12	High
2025-ColdSpringT-12	Bridge Evaluations	1	1	1	1	0	0	1	1	1	1	1	1	1	0	11	High
2025-ColdSpringT-13	Federal Accreditation Standards	1	1	1	1	0	0	0	1	1	1	1	1	1	1	11	High

Note: Volume I, Section 16 (Mitigation Strategy) conveys guidance on prioritizing mitigation actions. Low (0-6), Medium (7-10), High (11-14).



Action 2025-ColdspringT-01. Critical Facility Protection

Lead Agency:	Critical Facility Owners and Managers									
Supporting Agencies:	Town Council									
Hazard(s) of Concern:	<input type="checkbox"/> Dam and Levee Failure <input checked="" type="checkbox"/> Flood <input type="checkbox"/> Landslide <input type="checkbox"/> Pandemic	<input type="checkbox"/> Severe Storm <input type="checkbox"/> Severe Winter Storm <input type="checkbox"/> Utility Failure <input type="checkbox"/> Wildfire								
Description of the Problem:	The Town Hall, which is also a polling place, is a critical facility located in the Special Flood Hazard Area and may have an increased risk to flooding impacts.									
Description of the Solution:	<p>The Town will notify the critical facility owners and managers of the facility's location in the flood hazard area. The Town will encourage each facility conduct a feasibility assessment to determine what additional floodproofing measures are needed at the critical facilities to protect them to the 500-year flood level. Options include:</p> <ul style="list-style-type: none"> <li>• Elevation of facility</li> <li>• Floodproofing of facility</li> <li>• Mobile flood barriers</li> </ul> <p>Once the most cost-effective option is identified, the facility owner or manager will carry out the option.</p>									
Estimated Cost:	Medium									
Potential Funding Sources:	FEMA HMA, USDA Community Facilities Grant Program, Emergency Management Performance Grants (EMPG) Program, Town Budget									
Implementation Timeline:	Within 5 Years									
Goals Met:	1, 3, 5									
Benefits:	Ensures continuity of operations of several critical facilities in the Town.									
Impact on Socially Vulnerable Populations:	Protection of critical facilities provides an opportunity for first responders and emergency managers to maintain critical services that socially vulnerable populations rely on.									
Impact on Future Development:	The risk of significant damage occurring to the structure will be reduced, which will allow critical operations to be maintained or only briefly interrupted in severe events. This provides continued support to both current and future development in the service area.									
Impact on Critical Facilities/Lifelines:	This action will protect critical facilities, maintaining the critical services that it provides.									
Impact on Capabilities:	This action improves continuity of operations during a flood event, allows for a more rapid return to pre-disaster capabilities after a flood event, and faster deployment of post disaster capabilities.									
Climate Change Considerations:	This action addresses anticipated increases in flooding frequency and severity through protection to the 500-year (0.2-percent annual chance) flood level.									
Mitigation Category	<input type="checkbox"/> Local Plans and Regulations (LPR) <input checked="" type="checkbox"/> Structure and Infrastructure Project (SIP)	<input type="checkbox"/> Natural Systems Protection (NSP) <input type="checkbox"/> Education and Awareness Programs (EAP)								
CRS Category	<input type="checkbox"/> Preventative Measures (PR) <input type="checkbox"/> Property Protection (PP) <input type="checkbox"/> Public Information (PI)	<input type="checkbox"/> Natural Resource Protection (NR) <input checked="" type="checkbox"/> Structural Flood Control Projects (SP) <input type="checkbox"/> Emergency Services (ES)								
Priority	<input checked="" type="checkbox"/> High	<input type="checkbox"/> Medium								
Alternatives:	<table border="1"> <thead> <tr> <th>Action</th> <th>Evaluation</th> </tr> </thead> <tbody> <tr> <td>No Action</td> <td>Current problem exists</td> </tr> <tr> <td>Relocate facilities</td> <td>Relocation is expensive and results in loss or delay of critical services in the immediate area</td> </tr> <tr> <td>Establish plans to enter into MOU with neighboring critical facilities to provide service during flood events</td> <td>Reduction in response times and delay of critical services in the immediate area.</td> </tr> </tbody> </table>		Action	Evaluation	No Action	Current problem exists	Relocate facilities	Relocation is expensive and results in loss or delay of critical services in the immediate area	Establish plans to enter into MOU with neighboring critical facilities to provide service during flood events	Reduction in response times and delay of critical services in the immediate area.
	Action	Evaluation								
	No Action	Current problem exists								
	Relocate facilities	Relocation is expensive and results in loss or delay of critical services in the immediate area								
Establish plans to enter into MOU with neighboring critical facilities to provide service during flood events	Reduction in response times and delay of critical services in the immediate area.									



Action 2025-ColdspringT-02. Repetitive Loss Properties

Lead Agency:	Code Enforcement		
Supporting Agencies:	Town Council		
Hazard(s) of Concern:	<input type="checkbox"/> Dam and Levee Failure <input checked="" type="checkbox"/> Flood <input type="checkbox"/> Landslide <input type="checkbox"/> Pandemic	<input type="checkbox"/> Severe Storm <input type="checkbox"/> Severe Winter Storm <input type="checkbox"/> Utility Failure <input type="checkbox"/> Wildfire	
Description of the Problem:	Frequent flooding events have resulted in damages to residential properties. These properties have been repetitively flooded as documented by paid NFIP claims. The Town has one repetitive loss properties, but other properties may be impacted by flooding as well.		
Description of the Solution:	The Town will conduct outreach to the impacted properties and will provide information on mitigation alternatives. After preferred mitigation measures are identified, the Town will collect required property-owner information and develop a FEMA grant application and BCA to obtain funding to implement acquisition/purchase/moving/elevating of the affected properties that experience frequent flooding. The parameters for this initiative would be funding, benefits versus cost, and willing participation of property owners.		
Estimated Cost:	Medium		
Potential Funding Sources:	FEMA FMA, FMA SWIFT, Town Budget, County Budget, Property Owners		
Implementation Timeline:	3 years		
Goals Met:	1		
Benefits:	This action would foster comprehensive floodplain management by removing at risk properties from the flood hazard area or elevating properties to reduce the flood risk.		
Impact on Socially Vulnerable Populations:	Collecting data regarding homeowners that reside within flood prone areas provides an opportunity to introduce location-specific opportunities for assistance. Socially vulnerable populations may be able to have houses elevated or acquired when it would otherwise be unaffordable.		
Impact on Future Development:	Increased outreach to homeowners within a flood prone area will limit construction in areas that are prone to hazard events. Homes may be acquired, which will remove those structures from the floodplain and prevent future development on those sites.		
Impact on Critical Facilities/Lifelines:	Removing structures from the floodplain decreases the demand on utilities and emergency services including health and medical, law enforcement, and search and rescue.		
Impact on Capabilities:	Outreach which promotes the removal of risk from the immediate floodplain via acquisition of properties will free up resources for search and rescue and other emergency operations as needed. This action will enhance the Town's current NFIP capabilities.		
Climate Change Considerations:	Climate change is likely to increase the frequency and severity of severe rainfall, flash flooding, riverine flooding, and coastal flooding from sea level rise and storm surge events. Removing structures from the floodplain will reduce the response and recovery costs as a result of these events and decrease the loss of human life as a result of these events. Elevating structures will reduce the recovery costs.		
Mitigation Category	<input type="checkbox"/> Local Plans and Regulations (LPR) <input checked="" type="checkbox"/> Structure and Infrastructure Project (SIP)	<input type="checkbox"/> Natural Systems Protection (NSP) <input type="checkbox"/> Education and Awareness Programs (EAP)	
CRS Category	<input type="checkbox"/> Preventative Measures (PR) <input type="checkbox"/> Property Protection (PP) <input type="checkbox"/> Public Information (PI)	<input type="checkbox"/> Natural Resource Protection (NR) <input checked="" type="checkbox"/> Structural Flood Control Projects (SP) <input type="checkbox"/> Emergency Services (ES)	
Priority	<input checked="" type="checkbox"/> High	<input type="checkbox"/> Medium	<input type="checkbox"/> Low
Alternatives:	Action		Evaluation
	No Action		Current problem exists
	Levee around floodplain		Costly, not enough room.
	Deployable flood barriers		Requires deployment. Residents may not have adequate time to deploy, especially those who are elderly or disabled.



Action 2025-ColdspringT-03. Substantial Damage Management Plan

Lead Agency:	Code Enforcement		
Supporting Agencies:	Town Council, Highway Department		
Hazard(s) of Concern:	<input type="checkbox"/> Dam and Levee Failure <input checked="" type="checkbox"/> Flood <input type="checkbox"/> Landslide <input type="checkbox"/> Pandemic <input checked="" type="checkbox"/> Severe Storm <input type="checkbox"/> Severe Winter Storm <input type="checkbox"/> Utility Failure <input type="checkbox"/> Wildfire		
Description of the Problem:	<p>Officials in NFIP-participating communities are responsible for regulating all development in SFHAs by issuing permits and enforcing local floodplain requirements, including Substantial Damage, for the repairs of damaged buildings. After any disaster event, they must:</p> <ul style="list-style-type: none"> <li>Determine where the damage occurred within the community and if the damaged structures are in an SFHA.</li> <li>Determine what to use for "market value" and cost to repair; uniformly applying regulations will protect against liability and promote equitable administration.</li> <li>Determine if repairing plus improving the damaged structure equals or exceeds 50% of the structure's pre-damage value.</li> <li>Require permits for floodplain development.</li> </ul> <p>The Town does not have a Substantial Damage Management Plan in place, nor do they have a formal process in place when conducting substantial damage determinations. The Town is in need of a formal process and plan to provide a framework for conducting such inspections and determinations.</p>		
Description of the Solution:	<p>The Town will develop a Substantial Damage Management Plan, following the six-step planning process in 2021 Developing a Substantial Damage Management Plan (<a href="https://crsresources.org/files/500/developing_subst_damage_mgmt_plan.pdf">https://crsresources.org/files/500/developing_subst_damage_mgmt_plan.pdf</a>). This plan will outline responsibilities for Substantial Damage determinations, determining market value, and permit approval processes following a disaster event.</p>		
Estimated Cost:	Low		
Potential Funding Sources:	Town Budget		
Implementation Timeline:	Within 3 years		
Goals Met:	1, 2, 4		
Benefits:	This action will provide a guidance document to determine substantial damage in the Town.		
Impact on Socially Vulnerable Populations:	Socially vulnerable populations may disproportionately be impacted by substantial damages.		
Impact on Future Development:	Not applicable		
Impact on Critical Facilities/Lifelines:	Not applicable		
Impact on Capabilities:	This action will produce substantial damage guidance for Town officials to use.		
Climate Change Considerations:	Climate change is leading to an increase in frequency and intensity of precipitation events, which also increases flooding and may lead to a main failure.		
Mitigation Category	<input checked="" type="checkbox"/> Local Plans and Regulations (LPR) <input type="checkbox"/> Structure and Infrastructure Project (SIP) <input type="checkbox"/> Natural Systems Protection (NSP) <input type="checkbox"/> Education and Awareness Programs (EAP)		
CRS Category	<input checked="" type="checkbox"/> Preventative Measures (PR) <input type="checkbox"/> Property Protection (PP) <input type="checkbox"/> Public Information (PI) <input type="checkbox"/> Natural Resource Protection (NR) <input type="checkbox"/> Structural Flood Control Projects (SP) <input type="checkbox"/> Emergency Services (ES)		
Priority	<input checked="" type="checkbox"/> High <input type="checkbox"/> Medium <input type="checkbox"/> Low		
Alternatives:	Action		Evaluation
	No Action		Current problem exists
	Rely on state or federal resources following disaster events		Resources may not be available during major widespread events
	Establish MOUs with outside agencies to conduct Substantial Damage Determinations		A plan outlining responsibility is still necessary to prevent missing important requirements



Action 2025-ColdspringT-04. Landslide Mitigation

Lead Agency:	Engineering	
Supporting Agencies:	Highway Department	
Hazard(s) of Concern:	<input type="checkbox"/> Dam and Levee Failure <input checked="" type="checkbox"/> Flood <input checked="" type="checkbox"/> Landslide <input type="checkbox"/> Pandemic	<input checked="" type="checkbox"/> Severe Storm <input checked="" type="checkbox"/> Severe Winter Storm <input type="checkbox"/> Utility Failure <input checked="" type="checkbox"/> Wildfire
Description of the Problem:	Landslide events are often driven by hazards such as heavy rain events, flooding, heavy snowmelt, and wildfires. Landslides can destroy the natural and built environments, causing detriment to the structures in its path. Landslides may be able to be mitigated by cutting banks to prevent erosion. The Town has many steep sloped areas throughout its jurisdiction and should determine local vulnerabilities to landslides threatening primary roadways and properties.	
Description of the Solution:	The Town Engineer will complete an assessment to identify an appropriate, cost-effective method to mitigation landslide risk within primary roads throughout the Town. Possible mitigation measures include: <ul style="list-style-type: none"> <li>• Construction of retaining walls, soil nailing, ground anchor walls</li> <li>• Install horizontal drains to reduce soil saturation</li> <li>• Cut banks along water ways to prevent oversaturated soils from falling</li> <li>• Install netting</li> </ul>	
Estimated Cost:	TBD after mitigation technique is chosen	
Potential Funding Sources:	FEMA HMA, Town Budget, CHIPS	
Implementation Timeline:	Within 5 years	
Goals Met:	1	
Benefits:	This action will identify measures to protect infrastructure in the transportation lifeline, which will lead to the assurance of clear roadways for evacuations, regular travel, and emergency responses.	
Impact on Socially Vulnerable Populations:	This action will assist socially vulnerable populations whose properties are impacted by landslide along Town roads. Keeping the roadway open to traffic also permits vulnerable populations to travel to critical appointments.	
Impact on Future Development:	Future development in the impacted area will be less likely to be impacted by landslides.	
Impact on Critical Facilities/Lifelines:	This action will identify measures to protect infrastructure in the transportation lifeline, which will lead to the assurance of clear roadways for evacuations, regular travel, and emergency responses.	
Impact on Capabilities:	This action improves the Town's reliability in terms of transportation.	
Climate Change Considerations:	A warmer atmosphere means storms have the potential to be more intense and occur more often, including increased periods of intense rain events. Saturated soils can lead to an increased possibility of landslide occurrences. Conversely, drier summer conditions may fuel wildfires, leading to unstable soils and resulting in landslide occurrences.	
Mitigation Category	<input type="checkbox"/> Local Plans and Regulations (LPR) <input checked="" type="checkbox"/> Structure and Infrastructure Project (SIP)	<input type="checkbox"/> Natural Systems Protection (NSP) <input type="checkbox"/> Education and Awareness Programs (EAP)
CRS Category	<input checked="" type="checkbox"/> Preventative Measures (PR) <input type="checkbox"/> Property Protection (PP) <input type="checkbox"/> Public Information (PI)	<input type="checkbox"/> Natural Resource Protection (NR) <input type="checkbox"/> Structural Flood Control Projects (SP) <input type="checkbox"/> Emergency Services (ES)
Priority	<input checked="" type="checkbox"/> High	<input type="checkbox"/> Medium
Alternatives:	<b>Action</b>	
	No Action	
	Reconstruct roadways outside of hazard area	
	Close roads and reroute traffic around hazard area	
		<b>Evaluation</b>
		Current problem exists
		Not feasible
		Not feasible, would cause confusion amongst travelers



Action 2025-ColdspringT-05. Floodplain Management Training

Lead Agency:	Code Enforcement		
Supporting Agencies:	Town Council		
Hazard(s) of Concern:	<input type="checkbox"/> Dam and Levee Failure <input checked="" type="checkbox"/> Flood <input type="checkbox"/> Landslide <input type="checkbox"/> Pandemic	<input type="checkbox"/> Severe Storm <input type="checkbox"/> Severe Winter Storm <input type="checkbox"/> Utility Failure <input type="checkbox"/> Wildfire	
Description of the Problem:	Floodplain managers require training. Those responsible for floodplain management are lacking in their knowledge of required duties. Training is sorely needed for all municipal officials and for code enforcement officials in charge of municipalities.		
Description of the Solution:	Where feasible, the Town will have Code staff attend trainings at FEMA's EMI in Emmitsburg Maryland for NFIP Basics and the Intermediate Floodplain management course (E0273). Where not feasible, officials will attend virtual trainings and review available resources from FEMA and ASFPM at the ASFPM ( <a href="https://www.floods.org/">https://www.floods.org/</a> ) website. Encourage staff to become Certified Floodplain Managers via the Association of State Floodplain Manager's CFM Certification Program.		
Estimated Cost:	Low		
Potential Funding Sources:	Town Budget		
Implementation Timeline:	Within 5 years		
Goals Met:	1, 3, 4		
Benefits:	Providing an opportunity for staff and officials to become further educated on floodplain management practices and standards can aid in the development of plans and procedures in a way that is conscious of the flood hazard.		
Impact on Socially Vulnerable Populations:	Officials that are up to date on flood risk are more likely to encourage development outside areas of high flood risk, which is where socially vulnerable populations have historically resided. Safer dwellings may be developed in a less vulnerable location.		
Impact on Future Development:	Officials that understand best practices in floodplain management will have the opportunity to influence future development and prevent unsafe building in flood hazard areas.		
Impact on Critical Facilities/Lifelines:	The opportunity will exist for leaders and operators of utilities and other essential services to attend training and provide direction on ways the prepare for, plan for, and prevent interruptions in service as a result of a flood.		
Impact on Capabilities:	Officials that attend trainings will have a more confident understanding of floodplain management principles and the basics of NFIP requirements and standards.		
Climate Change Considerations:	Climate change is likely to result in stronger and more frequent rainfall events that will contribute to increased flood risk		
Mitigation Category	<input type="checkbox"/> Local Plans and Regulations (LPR) <input type="checkbox"/> Structure and Infrastructure Project (SIP)	<input type="checkbox"/> Natural Systems Protection (NSP) <input checked="" type="checkbox"/> Education and Awareness Programs (EAP)	
CRS Category	<input type="checkbox"/> Preventative Measures (PR) <input type="checkbox"/> Property Protection (PP) <input checked="" type="checkbox"/> Public Information (PI)	<input type="checkbox"/> Natural Resource Protection (NR) <input type="checkbox"/> Structural Flood Control Projects (SP) <input type="checkbox"/> Emergency Services (ES)	
Priority	<input checked="" type="checkbox"/> High	<input type="checkbox"/> Medium	<input type="checkbox"/> Low
Alternatives:	Action		Evaluation
	No Action		Current problem exists
	Hire outside contractors for floodplain administration		Costly
	Establish shared service agreements for floodplain administration from neighboring municipalities		Neighboring municipalities are unlikely to have the staff capacity to take on this role



Action 2025-ColdspringT-06. Flood Damage Prevention Ordinance Update

Lead Agency:	Code Enforcement	
Supporting Agencies:	Town Council	
Hazard(s) of Concern:	<input type="checkbox"/> Dam and Levee Failure <input checked="" type="checkbox"/> Flood <input type="checkbox"/> Landslide <input type="checkbox"/> Pandemic	<input type="checkbox"/> Severe Storm <input type="checkbox"/> Severe Winter Storm <input type="checkbox"/> Utility Failure <input type="checkbox"/> Wildfire
Description of the Problem:	The Town does not have a flood damage prevention ordinance. This ordinance, or local law, must include the 2-foot mandated NYS freeboard requirements. While the existing ordinance may be compliant with NFIP requirements, State requirements which exceed NFIP requirements must be adhered to.	
Description of the Solution:	The Town will work with Cattaraugus County and NYSDEC to ensure its Flood Damage Prevention Ordinance is created to adhere to NYS requirements. After obtaining the appropriate review and concurrence by the NFIP State Coordinator and the FEMA Regional Office, the Town will adopt the Flood Damage Prevention Ordinance.	
Estimated Cost:	Low	
Potential Funding Sources:	Town Budget	
Implementation Timeline:	Within 3 years	
Goals Met:	1, 2, 4	
Benefits:	The ordinance will improve floodplain management, meet NFIP and State requirements, and increase resilience of new and substantially improved structures in the floodplain.	
Impact on Socially Vulnerable Populations:	The action will result in better regulation of construction standards within the Special Flood Hazard Area where significant risk to socially vulnerable populations exists.	
Impact on Future Development:	The action will result in stronger regulation of construction standards for future development in the Special Flood Hazard Area.	
Impact on Critical Facilities/Lifelines:	Critical facilities and lifelines located in the Special Flood Hazard Area will be required to meet the requirements set forth in the ordinance.	
Impact on Capabilities:	This action will improve floodplain management capabilities through better outlining of responsibilities and administrative procedures.	
Climate Change Considerations:	The ordinance includes the State's higher standards that are in place to address heightened flood risk due to climate change such as those for floodway rise and mandatory freeboard.	
Mitigation Category	<input checked="" type="checkbox"/> Local Plans and Regulations (LPR) <input type="checkbox"/> Structure and Infrastructure Project (SIP)	<input type="checkbox"/> Natural Systems Protection (NSP) <input type="checkbox"/> Education and Awareness Programs (EAP)
CRS Category	<input checked="" type="checkbox"/> Preventative Measures (PR) <input type="checkbox"/> Property Protection (PP) <input type="checkbox"/> Public Information (PI)	<input type="checkbox"/> Natural Resource Protection (NR) <input type="checkbox"/> Structural Flood Control Projects (SP) <input type="checkbox"/> Emergency Services (ES)
Priority	<input checked="" type="checkbox"/> High	<input type="checkbox"/> Medium
Alternatives:	<b>Action</b>	
	No Action	
	Only freeboard requirements	
	Leave NFIP	
<b>Evaluation</b>		
Current problem exists		
Other areas of the ordinance which need to be updated would not be		
Residents lose flood insurance coverage		



Action 2025-ColdspringT-07. Comprehensive Outreach Program

Lead Agency:	Town Supervisor		
Supporting Agencies:	Town Council, Cattaraugus County		
Hazard(s) of Concern:	<input checked="" type="checkbox"/> Dam and Levee Failure <input checked="" type="checkbox"/> Flood <input checked="" type="checkbox"/> Landslide <input checked="" type="checkbox"/> Pandemic	<input checked="" type="checkbox"/> Severe Storm <input checked="" type="checkbox"/> Severe Winter Storm <input checked="" type="checkbox"/> Utility Failure <input checked="" type="checkbox"/> Wildfire	
Description of the Problem:	The Town currently does not have a comprehensive education and outreach program which addresses all identified hazards of concern. There is a need to educate residents and businesses about hazard mitigation, preparation, response, and recovery utilizing a variety of outreach methods. The Town does not currently have hazard mitigation information and outreach on the Town website.		
Description of the Solution:	Create outreach materials, or utilize those from Cattaraugus County, on hazard risks and methods of mitigation measures, including those for dam and levee failure, flood, landslide, pandemic, severe storm, severe winter storm, utility failure, and wildfire. Methods of distribution may include Town events, the Town newsletters, social media, the Town website, and having the materials on display for the public at Town libraries and offices. Outreach materials will be specified with education and information for each individual hazard of concern.		
Estimated Cost:	Low		
Potential Funding Sources:	Town Budget		
Implementation Timeline:	1 year		
Goals Met:	1, 2, 3, 4		
Benefits:	This action will improve the current public education and outreach program in the Town by including discussions on disaster preparedness and hazard mitigation to residents and business owners, which will contribute to the resiliency of the Town.		
Impact on Socially Vulnerable Populations:	Socially vulnerable populations will learn how to prepare for and mitigate the various hazards which may impact them in the Town.		
Impact on Future Development:	Not applicable		
Impact on Critical Facilities/Lifelines:	Businesses, which may be considered critical facilities or lifelines, would be more informed on how to prepare for emergency events and mitigate the risks of potential hazards. With these businesses becoming more resilient, this action would contribute to their continuity of operations.		
Impact on Capabilities:	This action would build upon the County's already existing public education and outreach program and adapt it to the Town's needs.		
Climate Change Considerations:	Climate change is likely to increase the intensity and frequency of many climate related disaster events. This action will inform residents and business owners of how to reduce risk from hazards and how climate change may exacerbate those risks.		
Mitigation Category	<input type="checkbox"/> Local Plans and Regulations (LPR) <input type="checkbox"/> Structure and Infrastructure Project (SIP)	<input type="checkbox"/> Natural Systems Protection (NSP) <input checked="" type="checkbox"/> Education and Awareness Programs (EAP)	
CRS Category	<input type="checkbox"/> Preventative Measures (PR) <input type="checkbox"/> Property Protection (PP) <input checked="" type="checkbox"/> Public Information (PI)	<input type="checkbox"/> Natural Resource Protection (NR) <input type="checkbox"/> Structural Flood Control Projects (SP) <input type="checkbox"/> Emergency Services (ES)	
Priority	<input checked="" type="checkbox"/> High	<input type="checkbox"/> Medium	<input type="checkbox"/> Low
Alternatives:	Action		Evaluation
	No Action		Current problem exists
	Rely on state or federal resources		Resources may be generalized and not specific to the risks in the Town
	Use only a few methods for distribution		Using only a few methods of distribution may hinder socially vulnerable populations from receiving the guidance



Action 2025-ColdspringT-08. Comprehensive Emergency Management Plan Update

Lead Agency:	Town Supervisor	
Supporting Agencies:	Town Council, Cattaraugus Office of Emergency Services	
Hazard(s) of Concern:	<input checked="" type="checkbox"/> Dam and Levee Failure <input checked="" type="checkbox"/> Flood <input checked="" type="checkbox"/> Landslide <input checked="" type="checkbox"/> Pandemic	<input checked="" type="checkbox"/> Severe Storm <input checked="" type="checkbox"/> Severe Winter Storm <input checked="" type="checkbox"/> Utility Failure <input checked="" type="checkbox"/> Wildfire
Description of the Problem:	The Town has an outdated Comprehensive Emergency Management Plan (CEMP). Hazard mitigation principles need to be integrated into the CEMP. A CEMP establishes the overall authority, roles, and functions performed during incidents. Incorporating hazard mitigation principles into a CEMP ensures hazard risk is identified.	
Description of the Solution:	The Town Supervisor will lead the update of the Comprehensive Emergency Management Plan (CEMP), with support from the Town Board and Cattaraugus Office of Emergency Services. The CEMP will integrate hazard mitigation principles into its contents, including addresses capabilities related to reduce the risk to the identified hazards of concern identified with this Hazard Mitigation Plan. The Town will send the CEMP to the County for review, followed by a State review.	
Estimated Cost:	Low	
Potential Funding Sources:	Town Budget, EMPG	
Implementation Timeline:	3 years	
Goals Met:	1, 2, 4, 5	
Benefits:	The CEMP details what the Town will do during a disaster (incident command implementation, command center location and activities, specific plans by department, etc.). The creation of a CEMP will permit the Town to integrate new plans, policies, capabilities, and hazard assessments.	
Impact on Socially Vulnerable Populations:	The section overview portion of the CEMP covers a discussion of a variety of topics, including population distribution and locations, including any concentrated populations of individuals with disabilities, others with access and functional needs, or individuals with limited English proficiency.	
Impact on Future Development:	Future development will be protected by the actions which the Town performs following the CEMP.	
Impact on Critical Facilities/Lifelines:	The section overview portion of the CEMP covers a discussion of a variety of topics, including vulnerable critical facilities (e.g. nursing homes, schools, hospitals, infrastructure).	
Impact on Capabilities:	This action will create a new planning and response capability for the Town.	
Climate Change Considerations:	Climate change may result in an increase in the frequency and severity of weather-related disaster events. As impacts from climate change are increasingly felt, the contents in an CEMP, including in the basic plan and any annexes, may need to be updated.	
Mitigation Category	<input checked="" type="checkbox"/> Local Plans and Regulations (LPR) <input type="checkbox"/> Structure and Infrastructure Project (SIP)	<input type="checkbox"/> Natural Systems Protection (NSP) <input type="checkbox"/> Education and Awareness Programs (EAP)
CRS Category	<input type="checkbox"/> Preventative Measures (PR) <input type="checkbox"/> Property Protection (PP) <input type="checkbox"/> Public Information (PI)	<input type="checkbox"/> Natural Resource Protection (NR) <input type="checkbox"/> Structural Flood Control Projects (SP) <input checked="" type="checkbox"/> Emergency Services (ES)
Priority	<input checked="" type="checkbox"/> High	<input type="checkbox"/> Medium
Alternatives:	<b>Action</b>	
	No Action	
	Integrate hazard mitigation principles in only hazard appendices	
	Ask County to integrate hazard mitigation into the County CEMP	
<b>Evaluation</b>		
Current problem exists		
The plan will miss integration opportunities in the basic plan and annexes		
Town CEMP will remain undeveloped		



Action 2025-ColdspringT-09. Cellular Accessibility

Lead Agency:	Town Council	
Supporting Agencies:	Cellular Service Providers	
Hazard(s) of Concern:	<input type="checkbox"/> Dam and Levee Failure <input type="checkbox"/> Flood <input type="checkbox"/> Landslide <input type="checkbox"/> Pandemic	<input type="checkbox"/> Severe Storm <input type="checkbox"/> Severe Winter Storm <input checked="" type="checkbox"/> Utility Failure <input type="checkbox"/> Wildfire
Description of the Problem:	There are cell phone connectivity issues in the Town which negatively influences emergency communication. A lack of ability to communicate can impact an individual's ability to understand or learn how to reduce their risk to hazards and mitigate those risks. A lack of connectivity can also impact first responders, as they must be able to communicate during events or incidents associated with all hazards of concern.	
Description of the Solution:	The Town will work with cellular service providers to identify locations which are still experiencing problems with connectivity. Cellular service providers will improve lines and install additional towers to ensure connectivity and reduce the risk of utility failure.	
Estimated Cost:	Medium	
Potential Funding Sources:	Cellular Providers, Town Budget	
Implementation Timeline:	Within 5 years	
Goals Met:	1, 4, 5	
Benefits:	Residents, business owners, first responders, and workers within the Town will have better access to cellular service.	
Impact on Socially Vulnerable Populations:	Socially vulnerable populations may not have the financial means to purchase a cellular service plan with high speeds to ensure connectivity with current capabilities. This action will assist in providing these populations with adequate cellular service.	
Impact on Future Development:	Connectivity will be available for individuals living in future developed areas.	
Impact on Critical Facilities/Lifelines:	Critical facilities may benefit from this action because it allows them to have increased communication and connections to other critical facilities and emergency responders.	
Impact on Capabilities:	This action will increase the Town's ability to effectively communicate.	
Climate Change Considerations:	Climate change is leading to an increase in severity and frequency in severe weather.	
Mitigation Category	<input type="checkbox"/> Local Plans and Regulations (LPR) <input checked="" type="checkbox"/> Structure and Infrastructure Project (SIP)	<input type="checkbox"/> Natural Systems Protection (NSP) <input type="checkbox"/> Education and Awareness Programs (EAP)
CRS Category	<input type="checkbox"/> Preventative Measures (PR) <input type="checkbox"/> Property Protection (PP) <input type="checkbox"/> Public Information (PI)	<input type="checkbox"/> Natural Resource Protection (NR) <input type="checkbox"/> Structural Flood Control Projects (SP) <input checked="" type="checkbox"/> Emergency Services (ES)
Priority	<input type="checkbox"/> High	<input checked="" type="checkbox"/> Medium
Alternatives:	<b>Action</b>	
	No Action	
	Town buys signal extender for all properties	
	Rent Cellular on Wheels (COWs)	
		<b>Evaluation</b>
		Current problem exists
		Cost prohibitive
		Cost prohibitive; only extends service in a limited area



Action 2025-ColdspringT-10. Generators at Critical Facilities

Lead Agency:	Engineering		
Supporting Agencies:	Town Council, Highway Department		
Hazards of Concern:	<input type="checkbox"/> Dam and Levee Failure <input checked="" type="checkbox"/> Flood <input type="checkbox"/> Landslide <input type="checkbox"/> Pandemic	<input checked="" type="checkbox"/> Severe Storm <input checked="" type="checkbox"/> Severe Winter Storm <input checked="" type="checkbox"/> Utility Failure <input type="checkbox"/> Wildfire	
Description of the Problem:	Critical facilities require backup power to ensure continuity of operations. The Town Highway Building (3017 Lebanon Road) does not have automatic backup power, which could impact the continuity of operations at the facility in the event of a utility or power failure. High winds severe weather and severe winter weather are known to cause utility failures, which would impact the continuity of operations at both critical facilities.		
Description of the Solution:	The Town Engineer will conduct a study to determine the required generator capacity to support the critical facilities. The Town will then purchase and install the generator and all necessary electrical hookup components. The installation of the back-up emergency generators will ensure continuity of operations for this critical facility and its operations during each identified hazard of concern. With expectations to provide essential services during times of emergency and otherwise, having a back-up power source is crucial. Long-term risks are mitigated through an emergency generator by reducing the likelihood of impacts from power outages, allowing essential services to continue.		
Estimated Cost:	High		
Potential Funding Sources:	FEMA HMA, USDA Community Facilities Grant Program, Emergency Management Performance Grants (EMPG) Program, Town Budget, Utility Fees		
Implementation Timeline:	Within 5 years		
Goals Met:	1, 4, 5		
Benefits:	This action protects public health and safety and ensures continued operation of critical facilities and their essential functions during a power outage.		
Impact on Socially Vulnerable Populations:	Protection of critical facilities provides an opportunity for first responders, utility workers, and emergency managers to stage and deploy resources to vulnerable and hazard prone areas.		
Impact on Future Development:	This action results in protection of critical facilities that could support future development.		
Impact on Critical Facilities/Lifelines:	This action protects public health and safety and ensures continued operation of a critical facility and its essential functions during a power outage.		
Impact on Capabilities:	This action ensures continuity of operations to maintain capabilities.		
Climate Change Considerations:	Climate change is likely to increase severe weather events such as flooding, wind, and extreme temperatures that result in power failures. This action accounts for a likely increase in power failure events.		
Mitigation Category	<input type="checkbox"/> Local Plans and Regulations (LPR) <input checked="" type="checkbox"/> Structure and Infrastructure Project (SIP)	<input type="checkbox"/> Natural Systems Protection (NSP) <input type="checkbox"/> Education and Awareness Programs (EAP)	
CRS Category	<input type="checkbox"/> Preventative Measures (PR) <input type="checkbox"/> Property Protection (PP) <input type="checkbox"/> Public Information (PI)	<input type="checkbox"/> Natural Resource Protection (NR) <input type="checkbox"/> Structural Flood Control Projects (SP) <input checked="" type="checkbox"/> Emergency Services (ES)	
Priority	<input checked="" type="checkbox"/> High	<input type="checkbox"/> Medium	<input type="checkbox"/> Low
Alternatives	Action		Evaluation
	No Action		-
	Microgrid		Costly and difficult to implement.
	Solar panels and battery backup		Solar power is unlikely to be able to provide battery power for extended power failure events.



Action 2025-ColdspringT-11. Floodprone Roads

Lead Agency:	Engineering	
Supporting Agencies:	Code Enforcement, Highway Department	
Hazard(s) of Concern:	<input type="checkbox"/> Dam and Levee Failure <input checked="" type="checkbox"/> Flood <input type="checkbox"/> Landslide <input type="checkbox"/> Pandemic	<input checked="" type="checkbox"/> Severe Storm <input type="checkbox"/> Severe Winter Storm <input checked="" type="checkbox"/> Utility Failure <input type="checkbox"/> Wildfire
Description of the Problem:	Flood prone roads not only interrupt the movement of persons and goods but can lead to isolation issues where first responders are unable to reach their destination and cause evacuation routes to be inaccessible. Flooded road ways may be caused by debris in culverts from severe storms and severe winter storms. There are multiple roads in Town which may benefit from flood mitigation strategies, such as the elevation of the roadways or the hardening of the infrastructure surrounding them to reduce likelihood of flooding including County Road 9 (Price Corners Road).	
Description of the Solution:	The Town will develop specific mitigation solutions for flood-prone road systems after conducting a flood study. Possible solutions may include: <ul style="list-style-type: none"> <li>• Elevation of roadways</li> <li>• Installation or improvement of drainage systems</li> <li>• Regrading of roadway and soils</li> <li>• Resurfacing or reshaping roadways</li> </ul>	
Estimated Cost:	TBD after mitigation technique is chosen	
Potential Funding Sources:	FEMA HMA, Town Budget, CHIPS	
Implementation Timeline:	Within 5 years	
Goals Met:	1	
Benefits:	This action will identify measures to protect infrastructure in the transportation lifeline, which will lead to the assurance of clear roadways for evacuations, regular travel, and emergency responses.	
Impact on Socially Vulnerable Populations:	This action will assist socially vulnerable populations whose properties are impacted by flooding along flood-prone roads.	
Impact on Future Development:	Future development in the impacted area will be less likely to be flooded.	
Impact on Critical Facilities/Lifelines:	This action will identify measures to protect infrastructure in the transportation lifeline, which will lead to the assurance of clear roadways for evacuations, regular travel, and emergency responses.	
Impact on Capabilities:	This action improves the Town's reliability in terms of transportation.	
Climate Change Considerations:	A warmer atmosphere means storms have the potential to be more intense and occur more often, including increased periods of intense rain events.	
Mitigation Category	<input type="checkbox"/> Local Plans and Regulations (LPR) <input checked="" type="checkbox"/> Structure and Infrastructure Project (SIP)	<input type="checkbox"/> Natural Systems Protection (NSP) <input type="checkbox"/> Education and Awareness Programs (EAP)
CRS Category	<input type="checkbox"/> Preventative Measures (PR) <input type="checkbox"/> Property Protection (PP) <input type="checkbox"/> Public Information (PI)	<input type="checkbox"/> Natural Resource Protection (NR) <input checked="" type="checkbox"/> Structural Flood Control Projects (SP) <input type="checkbox"/> Emergency Services (ES)
Priority	<input checked="" type="checkbox"/> High	<input type="checkbox"/> Medium <input type="checkbox"/> Low
Alternatives:	Action	Evaluation
	No Action	Current problem exists
	Relocate all flood-prone road system	Not feasible
	Raise all flood prone roads	Cost prohibitive



Action 2025-ColdspringT-12. Bridge Evaluations

Lead Agency:	Highway Department		
Supporting Agencies:	Cattaraugus County Engineering, Cattaraugus County Public Works, NYS DOT		
Hazard(s) of Concern:	<input type="checkbox"/> Dam and Levee Failure <input checked="" type="checkbox"/> Flood <input type="checkbox"/> Landslide <input type="checkbox"/> Pandemic	<input checked="" type="checkbox"/> Severe Storm <input checked="" type="checkbox"/> Severe Winter Storm <input type="checkbox"/> Utility Failure <input type="checkbox"/> Wildfire	
Description of the Problem:	<p>Scour on bridges can develop due to erosion. Erosion may occur due to waters impacting the bridge's structure during severe winter storms and severe storms when the precipitation causes the water movements to be more erratic. Rising waters may cause flooding conditions to further erode the structure of the bridge. The following bridges in the jurisdiction should be evaluated to determine useability and to identify potential solutions, as necessary:</p> <ul style="list-style-type: none"> <li>• Coldspring 12</li> <li>• Coldspring 13</li> <li>• Coldspring 18</li> </ul>		
Description of the Solution:	<p>The Highway Department will work with Cattaraugus County Engineering and Public Works to evaluate each bridge to determine its current usability. The evaluation will indicate whether the County will need to replace or retrofit the identified bridges and causeways. This evaluation should be performed in partnership and/or with feedback from NYS DOT as necessary.</p>		
Estimated Cost:	Medium		
Potential Funding Sources:	FEMA HMA, County Budget, BRIDGENY		
Implementation Timeline:	Within 5 years		
Goals Met:	1		
Benefits:	This action will ensure the bridges in the jurisdiction are structurally sound to continue in operation.		
Impact on Socially Vulnerable Populations:	Not applicable		
Impact on Future Development:	Not applicable		
Impact on Critical Facilities/Lifelines:	This action will ensure transportation routes remain open and accessible to the public for daily use and evacuation needs; the bridges provide a point of access for first responders into communities that may have faced damage from a hazard event on either side of the bridges.		
Impact on Capabilities:	Not applicable		
Climate Change Considerations:	Climate change is likely to increase the intensity and frequency of many climate related disaster events. This action will work to ensure the structure of the bridges are impervious to erosion at their base due to rising water levels.		
Mitigation Category	<input checked="" type="checkbox"/> Local Plans and Regulations (LPR) <input type="checkbox"/> Structure and Infrastructure Project (SIP)	<input type="checkbox"/> Natural Systems Protection (NSP) <input type="checkbox"/> Education and Awareness Programs (EAP)	
CRS Category	<input checked="" type="checkbox"/> Preventative Measures (PR) <input type="checkbox"/> Property Protection (PP) <input type="checkbox"/> Public Information (PI)	<input type="checkbox"/> Natural Resource Protection (NR) <input type="checkbox"/> Structural Flood Control Projects (SP) <input type="checkbox"/> Emergency Services (ES)	
Priority	<input checked="" type="checkbox"/> High	<input type="checkbox"/> Medium	<input type="checkbox"/> Low
Alternatives:	Action		Evaluation
	No Action		Current problem exists
	Remove bridges		May cause significant traffic problems
	Replace bridges		Cost prohibitive



Action 2025-ColdspringT-13. Federal Accreditation Standards

Lead Agency:	Municipal Engineer	
Supporting Agencies:	Cattaraugus County Public Works, FEMA, USACE, Dam Owners, Levee Owners	
Hazard(s) of Concern:	<input checked="" type="checkbox"/> Dam and Levee Failure <input checked="" type="checkbox"/> Flood <input type="checkbox"/> Landslide <input type="checkbox"/> Pandemic	<input type="checkbox"/> Severe Storm <input type="checkbox"/> Severe Winter Storm <input type="checkbox"/> Utility Failure <input type="checkbox"/> Wildfire
Description of the Problem:	Federal accreditation of floodwater retention structures shows the dams and levees have met and continue to meet the minimum regulatory standards set by the regulatory agencies. The accreditation of these structures show they are able to support efforts in the mitigation of flood risk.	
Description of the Solution:	The Town will partner with Cattaraugus County to assist with communications to dam and levee owners and operators. Communication with dam and levee owners and/or operators will be focused on ensuring the structure(s) are accredited and/or how to get the structure(s) accredited.	
Estimated Cost:	Low	
Potential Funding Sources:	County Budget, Jurisdictional Budget, Dam Owners, Levee Owners	
Implementation Timeline:	4 years	
Goals Met:	1, 2, 4, 6, 7	
Benefits:	Federal accreditation of floodwater retention structures shows the dams and levees have met and continue to meet the minimum regulatory standards set by the regulatory agencies. The accreditation of these structures show they can support efforts in the mitigation of flood risk.	
Impact on Socially Vulnerable Populations:	Accreditation of the structures show they can support efforts in the mitigation of flood risk, including impacts on the populations, and their property, near the structures.	
Impact on Future Development:	Accreditation of the structures show they can support efforts in the mitigation of flood risk. Future development near the structures will have reduced risk to the flood hazard.	
Impact on Critical Facilities/Lifelines:	Accreditation of the structures show they can support efforts in the mitigation of flood risk. Critical facilities near the structures will have reduced risk to the flood hazard. Dams and levees are critical facilities. Accredited structures meet the minimum regulatory standards set by the regulatory agencies.	
Impact on Capabilities:	This action will strengthen flood risk reduction capabilities. Having an accredited structure means they can support efforts in mitigating the risk of the flood hazard.	
Climate Change Considerations:	Climate change is likely to increase the intensity and frequency of many climate related disaster events, including heavy rainfalls and flooding events. Heavy rainfalls can cause additional pressure and stress on dams and levees, leading to failure. Federal accreditation of floodwater retention structures shows the dams and levees have met and continue to meet the minimum regulatory standards set by the regulatory agencies.	
Mitigation Category	<input checked="" type="checkbox"/> Local Plans and Regulations (LPR) <input type="checkbox"/> Structure and Infrastructure Project (SIP)	<input type="checkbox"/> Natural Systems Protection (NSP) <input type="checkbox"/> Education and Awareness Programs (EAP)
CRS Category	<input type="checkbox"/> Preventative Measures (PR) <input type="checkbox"/> Property Protection (PP) <input type="checkbox"/> Public Information (PI)	<input type="checkbox"/> Natural Resource Protection (NR) <input type="checkbox"/> Structural Flood Control Projects (SP) <input checked="" type="checkbox"/> Emergency Services (ES)
Priority	<input checked="" type="checkbox"/> High	<input type="checkbox"/> Medium
Alternatives:	<input type="checkbox"/> Low	
	Action	Evaluation
	No Action	Current problem exists
	Only work to ensure dam accreditation	Levees may not be accredited
Only work to ensure levee accreditation	Dams may not be accredited	